

bushfire mgmt

- escapes were attacked *vigorously*,
- treated the same as *wildfires* –
- hoselays and aircraft firebombing



- smouldering fire difficult to see in *duff fuels* – hard to black out properly

bushfire.org

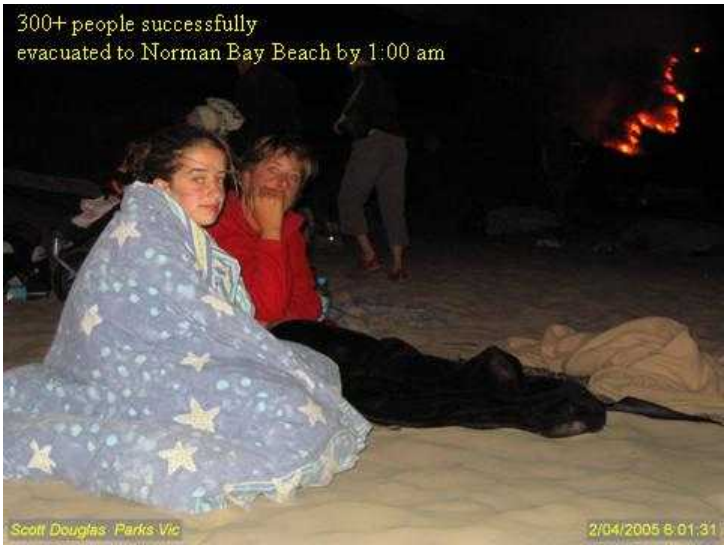


-escaped during the night – one of the *hottest and windiest April nights* at Wilsons Prom on record.

bushfire.org

Date	Stn	Time EDST	Wind Dirn	Wind Speed km/h	Gust km/h	Temp deg C	Dew Pt deg C	RH (%)	FDI
10/4/2005	YWLP	2130	320	41.4	61.2	26.7	6.7	28.0	25
10/4/2005	YWLP	2200	320	37.8	59.4	26.6	6.6	28.0	28
10/4/2005	YWLP	2230	320	39.6	59.4	26.5	6.5	28.0	29
10/4/2005	YWLP	2300	320	32.4	52.2	26.5	6	27.0	25
10/4/2005	YWLP	2330	320	28.8	52.2	26.3	6.4	28.1	23
20/4/2005	YWLP	0000	320	28.8	46.8	26.2	6.3	28.1	23
20/4/2005	YWLP	0030	320	28.8	50.4	25.9	6	28.0	23
20/4/2005	YWLP	0100	320	27	48.6	25.9	6	28.0	22

300+ people successfully evacuated to Norman Bay Beach by 1:00 am



Fire Growth:



- already 100+ ha and 5000m+ perimeter by daylight next day
- hot windy weather, long unburnt fuels and hostile terrain meant fire grew rapidly during Sat 2 April 2005
- fire ran from west to east across the Prom in about 5 hours (8-10km)
- fire extended further to south that night to burn out 17% of Prom National Park

Victoria Police Air Wing

2/04/2005 15:18:28



- already 100+ ha and 5000m+ perimeter by daylight next day

Brian Doolan Parks Vic

2/04/2005 9:26:21

- hot windy weather, long unburnt fuels and hostile terrain meant fire grew rapidly during Sat 2 April 2005



Victoria Police Air Wing

2/04/2005 15:18:28

- fire ran from west to east across the Prom in about 5 hours (8-10km)



- fire extended further to south that night to burn out 17% of Prom National Park



Fire Suppression:

- 18km+ handtrail from west to east across the Prom (av 5m/person/hr) over 14 days
- 5 remote helipads built – av 50 firefighters ferried each day
- firebombing supported hand trailing when fire hotter
- excellent minimum impact suppression in “icon national park”



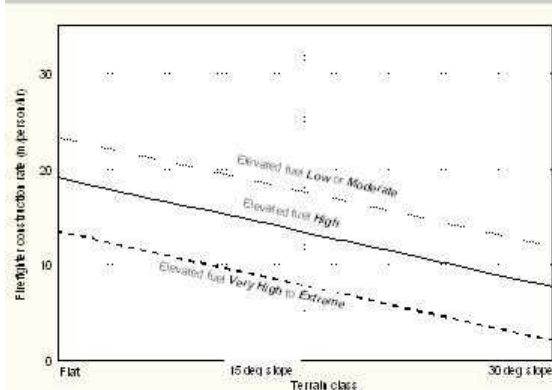
- 18km+ handtrail from west to east across the Prom
(av 5m/person/hr) over 14 days

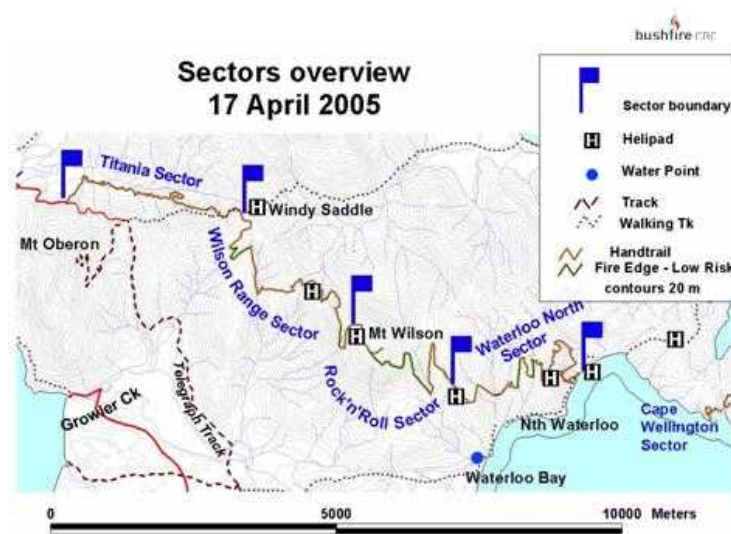


- 18km+ handtrail from west to east across the Prom
(av 5m/person/hr) over 14 days



-(av 5m/person/hr) -agreed with model in Guide for:
15 to 30 deg terrain and *Very High* to *Extreme* elevated fuel

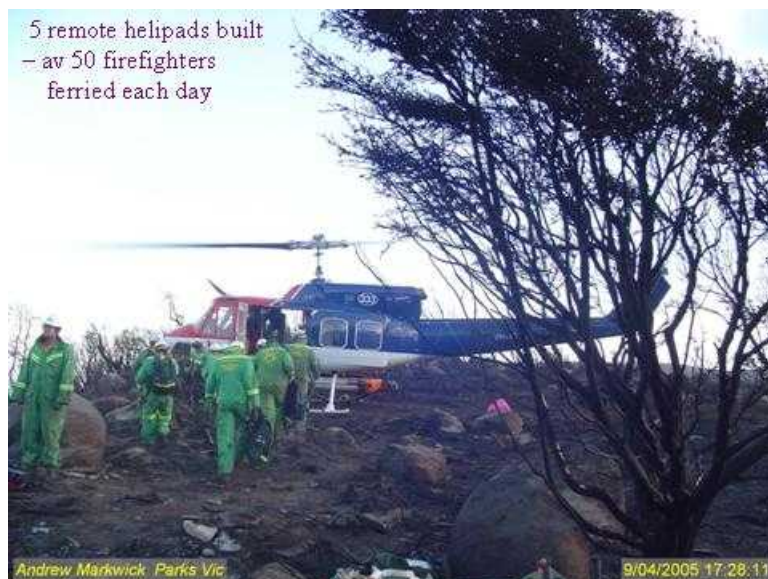




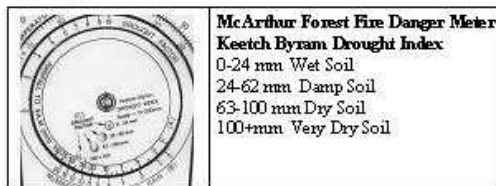
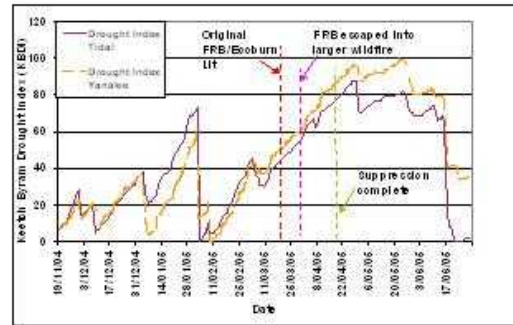
- firebombing supported hand trailing when fire hotter



5 remote helipads built
- av 50 firefighters
ferried each day



Drought Index trends leading up to wildfire



Outcomes:



- fires in *duff fuels* extremely hard to make safe without *substantial rain*
- need to be aware that fires may *continue to burn overnight* at drought indices (*KBDI*) *> 60* (i.e. soil *dry*, little effect on fuel moisture)
- *firebombing aircraft* can be used very effectively to *support hand trail crews* at FDIs up to *High*
- mineral earth hand trails can be effective "*minimum impact*" fire control lines in areas of *high conservation value*
- *Very High* to *Extreme* elevated/shrub fuels and steep terrain can slow hand trail rates to 5m/person/hr or less